

LEAB chAmp 12 / 7 III LEAB chAmp 24 / 4 III



Art 003333X

2012-01-25	Utg 2	P101-022				
MH	Champ 12 7				003333x	

General description

This Primepower product is a high efficient, intelligent and very compact battery charger. Suitable for all Lead acid batteries. It is a switch mode design and includes the latest component and technology in power conversion. The internal electronics controls the charging phase throughout the charging phase and will handle parallel load . The charging phases are monitored and adjusted continuously during the charging process.

The product is suitable both in marine and automotive and industrial applications.

Features

- Latest MosFET technology
- High efficiency, Cool running normal operation
- Adaptable to different battery types
- Waterproof and shock resistant, IP67
- Powder coated Metal enclosure
- Small and easy to install

Part number / order information

Primepower part number	Specification
003333X	12V / 7A 100W
003333X	24V / 4A 100W

Numbers shows the basic standard models
Different charging algorithms or cables results into other article numbers.

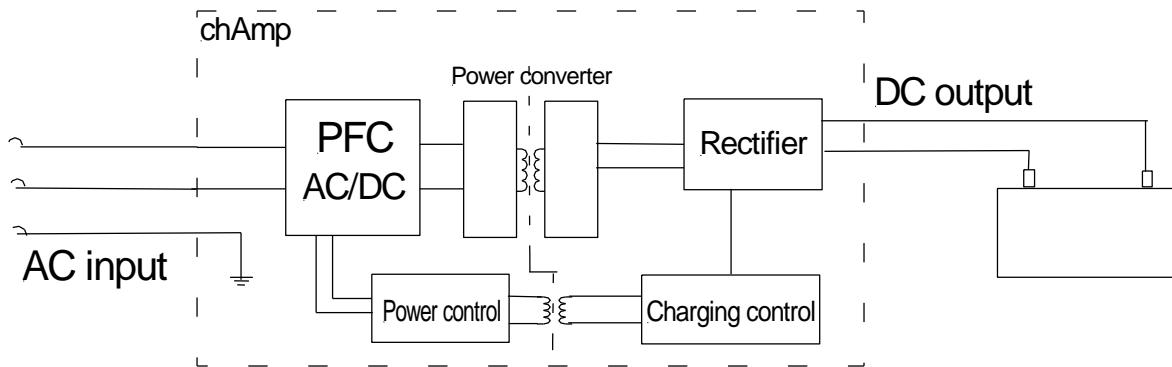
2012-01-25	Utg 2	P101-022				
MH	Champ 12 7				003333x	

Theory of operation

The Primepower LEAB chAmp family is one of the most compact battery chargers available.

The input AC voltage is feed through a passive PFC stage and converted into a DC Voltage of approx 400V. A high frequency switch into a low dc voltage does the power conversion. This voltage is controlled by the internal electronics and rectified to a correct charging voltage on output.

Block Diagram



Charging algoritm

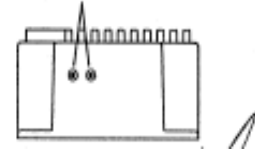
The charging in standard program is indicated as follows:

Step 1, the bulk phase is indicated with the yellow LED.

This indication is kept through step 2.

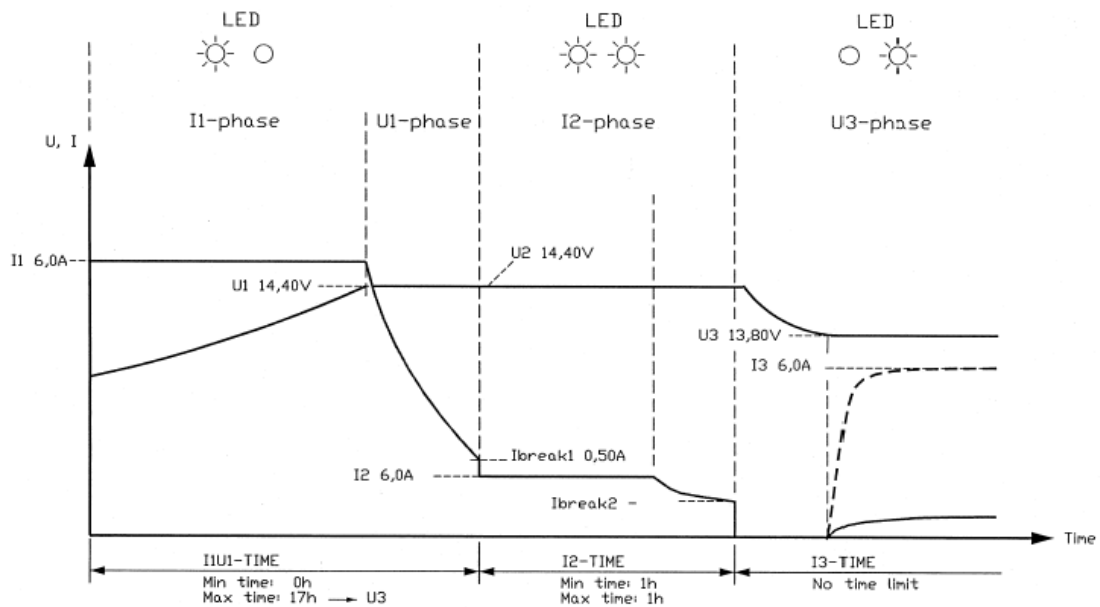
When the current is below 15% of the maximum output the charger goes into step 3 and the green LED is lit up. After approx 2 hours the yellow LED is turned off and green LED is turned on as long as the charger is connected to mains.

LED indication charger



Can be used as a powersupply

2012-01-25	Utg 2	P101-022			
MH	Champ 12 7			003333x	



Symbolic values

Descriptions of features

The complete electronics is mounted in the metal enclosure and totally sealed in polyurethane. Water, oil or other substances will thereby be effectively kept out. The champ can be mounted in very harsh environment such as engine-compartment due to the encapsulation.

Before potting different charging algorithms can be applied and customized chargers can be made upon request.

The standard programming is suitable for Lead acid batteries -Open or gel-, in most applications.

2012-01-25	Utg 2	P101-022			
MH	Champ 12 7			003333x	

Electrical specifications

ABSOLUTE MAXIMUM RATINGS

Maximum ratings establish the maximum electrical rating to which the unit may be subjected without damage

Parameter	Value	Units	Notes
Output Current / Voltage	7	A	12V
	16	V	
	4	A	24V
	30	V	
Stand off voltage	20	V	12V
	40	V	24V
Heat Sink Temperature	65	°C	
Operating Temperature Range	-25°C - +40°C		
Storage Temperature Range	-55°C- 85°C		
Fuse			10A

Electrical Characteristics

Unless otherwise stated, conditions apply to full temperature range and full input voltage range.

Characteristic	MIN	TYP	MAX	Unit	Notes:
Input Voltage	90	115/230	255	VAC	1
Input Over Voltage			285	VAC	
Input frequency		40-60Hz			
Quiescent Current off			<5	mA	
Quiescent Current on			150	mA	
Output voltage 12 nom	14,3/13,5	14,4/13,7	14,5/13,9	V	
Output voltage 24 nom	28,4/27	28,8/27,5	29/27,9	V	
Efficiency 003333x		90%			
Voltage rippel 100W	20	30	50	mV	

1. Reduced output power < 95VAC

2012-01-25	Utg 2	P101-022			
MH	Champ 12 7			003333x	

Environmental Specifications

Parameter	Level	Conditions / Notes
Humidity	0 – 100 %RH	
Splash	Yes, IP67	
Pressure Wash	Yes, IP67	
Mechanical Vibration	40G	according to standard IEC 60068-2-6
Handling Shock	Will Show Damage	

Mechanical specifications

The unit utilizes two 1,5mm² Tin plated copper cable making power connections. Cable mounted fuse on plus lead.

Length 1,5M. The AC connection is with standard PVC cord 3x0,75 1,5M.

Finish: Grey RAL 7035, powder coated aluminium

Potting material: Polyurethane

Mounting Slots: 4X, Accepts M4-M6 (6mm diam) Hardware (not included)

Weight: 0,9Kg

Unit Dimensions: 155 x 80 x 43

Connection and installation:

Mount the charger with LED:s facing up and cable downwards. This will maintain an efficient cooling and a maximum output current during the whole charging cycle.

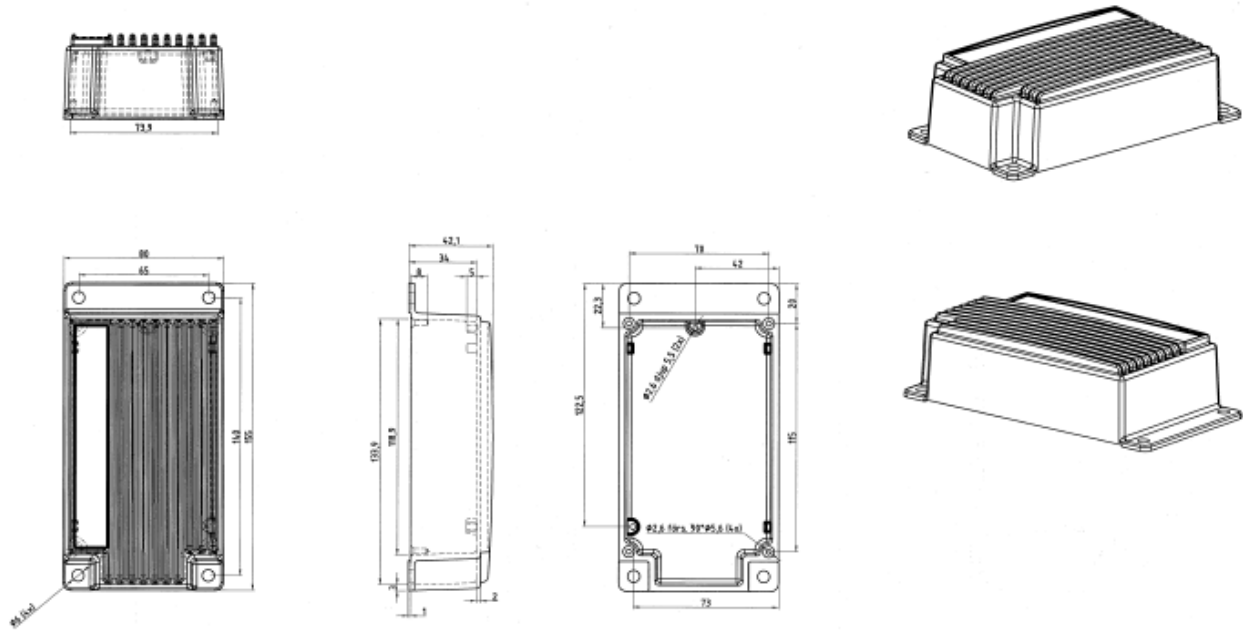
Do not extend charging cables. That may affect the charging result.

Batteries can generate explosive gases - avoid open flames or sparks

It is not allowed to modify the main cable.

No reliability will be excepted for damages occurred by use without observation.

2012-01-25	Utg 2	P101-022				
MH	Champ 12 7				003333x	



Approvmnts

In accordance with the following EN-norms:

Low Voltage Directive, 2006/95/EC, the EMC Directive, 2004/108/EC, including amendments by the CE marking Directive, 93/68/EEC

The following harmonised European standards or technical specifications have been applied :

Standards Test reports issued by Regarding
 EN 60 335-1 Intertek SEMKO electrical safety
 EN 60 335-2-29 ,SS 4330770 Intertek SEMKO electrical safety
 EN 61204-3:2000 Intertek SEMKO EMC emission
 EN 61204-3:2000 Intertek SEMKO EMC immunity
 EN 50366:2003+A1 Intertek SEMKO EMF, magnetics

CE

2012-01-25	Utg 2	P101-022			
MH	Champ 12 7			003333x	